

LTS100

LimitTester BASIC (BT100 add-on feature)



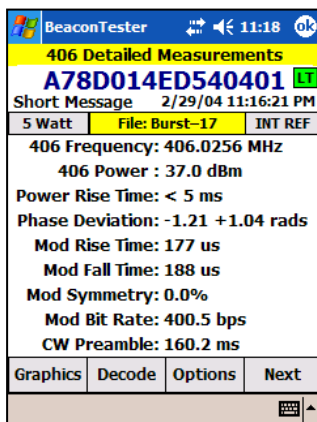
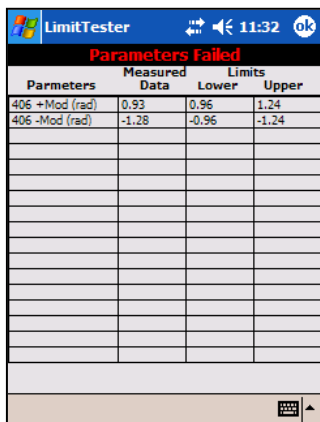
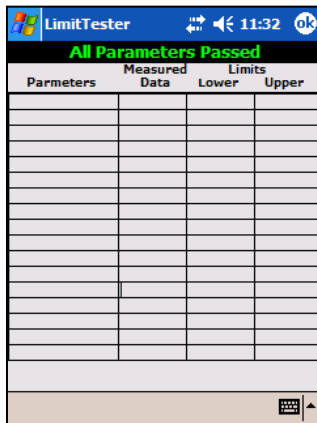
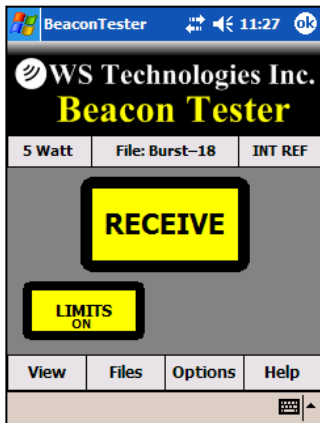
Take the guess work out of testing beacons!

Perfect companion to the BT100 series of Beacon Testers!

Ensure the beacons you test are tested thoroughly!

The LTS100 LimitTester is an add-on feature to the industry standard BT100 series of Beacon Testers. The LTS100 verifies your Beacon test results against a defined set of limits and immediately shows if the beacon passes or fails! A report is generated showing all of the measured parameter names, the upper and lower limits, the measured values and a pass or fail indication for each parameter.

- you can select the measurements you want to test
- Test Report is in tabulated html format – interrogate on the fly, import into a spreadsheet, save electronically, or print as-is
- automatically determines measurement modes from BT100 settings
- re-test previous measurements to different limit settings



LimitTester Report

A78D014ED540401

Organization:
 Tested By:
 Date: 3/1/04 12:13:44 AM
 Tester Model/Serial No./File Name: BT100A/64021/Burst-20
 Tester Cal Due Date: Aug 17, 2012
 Tester Temperature: 25°C

Notes: Add text comments here.

Parameters	Measured Data	Lower Limit	Upper Limit	Pass/Fail
406 Freq (Hz) (INT REF)	406027474	406019575	406045425	Pass
406 Power (dBm)	37.0	34	40	Pass
406 Power Rise (ms)	< 5.5 ms	-	5.5	Pass
406 +Mod (rad)	0.89	0.96	1.24	Fail
406 -Mod (rad)	-1.32	-0.96	-1.24	Fail
406 Mod Rise (us)	165	40	260	Pass
406 Mod Fall (us)	188	40	260	Pass
406 Bit Rate (bps)	400.4	395.8	404.2	Pass
406 Preamble (ms)	160.2	157.6	162.4	Pass
406 Spectrum C1 (dB)	<	-20	3	Pass
406 Spectrum C2 (dB)	<	-30	7	Pass
406 Spectrum C3 (dB)	<	-35	12	Pass
406 Spectrum C4 (dB)	<	-40	24	Pass
406 BCH	Valid	-	-	Pass

The LTS100 LimitTester BASIC is a cost effective solution for aiding in BT100 Beacon Testing. For those that need a more advanced testing solution check out the more detailed LTS200 LimitTester ADVANCED.

For a LTS100 demonstration contact us for your free activation code.

LTS100 Specifications

PARAMETER	UNITS	C/S T.001 Limits	BT100 Uncert	DEFAULT LIMITS (including BT100 Uncert)		
406 MHz				Lower	Upper	
406 Frequency (Int Ref)	Hz	±5000	±425	406019575	406045425	
406 Frequency (Ext Ref)	Hz	±5000	±1	406019999	406081001	
406 Power Level	5 WATT	dBm	35 to 39	±1	34	40
	INT ANT*	%	n/a		5	105
	EXT COAX*	%	n/a		5	105
406 Power Rise Time	ms	<5	0.5	-	-	5.5
406 PM +ve Phase Deviation	rad	1.0 to 1.2	±0.04	0.96	-	1.24
406 PM -ve Phase Deviation	rad	-1.0 to -1.2	±0.04	-0.96	-	-1.24
406 PM Rise Time	µs	50 to 250	±10	40	-	260
406 PM Fall Time	µs	50 to 250	±10	40	-	260
406 PM Symmetry	-	≤0.05	±0.005	-	-	0.055
406 PM Bit Rate	Hz	396 to 404	±0.2	395.8	-	404.2
406 CW Preamble	ms	158.4 to 161.6	±0.8	157.6	-	162.4
406 Spectral Mask	Corner 1		dBC ±kHz	-20	-	3
	Corner 2		dBC ±kHz	-30	-	7
	Corner 3		dBC ±kHz	-35	-	12
	Corner 4		dBC ±kHz	-40	-	24
406 Digital Message	-			Verification of BCH1 & BCH2		
121 &/or 243 MHz				Lower	Upper	
121 Frequency (Int Ref)	Hz	±50 ppm	±150	121493825	121506175	
121 Frequency (Ext Ref)	Hz	±50 ppm	±30	121493895	121506105	
121 Power Level	5 WATT	dBm	14 to 30	±1.5	12.5	31.5
	INT ANT*	%	n/a		5	105
	EXT COAX*	%	n/a		5	105
243 Frequency (Int Ref)	Hz	±50 ppm	±300	242987650	243012350	
243 Frequency (Ext Ref)	Hz	±50 ppm	±30	242987820	243012180	
243 Power Level	5 WATT	dBm	14 to 30	±1.5	12.5	28.5
	INT ANT*	%	n/a		5	105
	EXT COAX*	%	n/a		5	105
Sweep Direction	UPWARDS, DOWNWARDS, or DON'T CARE					
Audio Freq - lower	Hz	300	±30	270	-	
Audio Freq - upper	Hz	1600	±30	-	1630	
Audio Sweep Range	Hz	≥700	±60	640	1360	
AM Sweep Rep Rate	Hz	2 to 4	±0.1	1.9	4.1	
AM Mod'n Factor	%	85 to 100	±5	84.5	100	
AM Duty Cycle	%	33 to 55	±2	31	57	

* Measurements made in the INT ANT or EXT COAX mode cannot determine the absolute output power of the beacon. The resulting measurement is a measure of the signal strength determined from the RSSI output from the receiver. A calibrated setup must be used in order to determine the absolute beacon power.

Developed and Manufactured in Canada by:

Minimum Requirements:

- BT100 Series Beacon Tester
- BT100 software version 3.0 or greater
- Capability to transfer files from PC to PDA (ActiveSync™ or SD memory card)



Kelowna, BC
CANADA
info@wst.ca
www.wst.ca



WS Technologies Inc. is an
ISO 9001 Certified company

ISO 9001
QMS-IAI Global