



WST

WS Technologies Inc.

Innovation and Quality

FBM200

Beacon Monitor

Automatically receives, decodes, logs, and maps all first generation Cospas Sarsat 406 MHz beacon transmissions from a wide surrounding area.

Features:

- real-time 406 beacon monitoring
- receives all past, present, and future first generation Cospas-Sarsat channels
- -125 dBm receiver sensitivity!
- adjustable receiver sensitivity level
- measures and displays RSSI (receiver signal strength)
- measures and displays frequency
- data logging - organizes and timestamps the data
- XML formatted data – very useful for database applications
- live beacon activation notification via LED and/or audio alerts
- send alerts via e-mail and/or SMS text messaging
- alarm relay contacts allow use of external lights, buzzers etc.
- DC power and PC interface via USB
- Ethernet connectivity (FBM200B) allows for remote management and remote diagnostics, and ability to network numerous units for broader coverage
- decodes GNSS location and displays distance to beacon (FBM200B)
- optional outdoor antenna
- very compact unit (4.3" x 2.5" x 1")
- aluminum construction – very rugged
- sits on desk or mounts on wall



Two models to choose from:

- | | |
|----------|--|
| FBM200-A | basic model |
| FBM200-B | adds Ethernet interface/GPS receive capabilities and mapping |

Applications include port monitoring, airfield monitoring, park monitoring, beacon facility monitoring, remote confirmation that a beacon is transmitting adequate strength (during self-test mode).



Beacon Monitor



Monitor

Setup

Status

2012-04-17 10:12:04

Connection Status

Receiver A

Computer Status

Audio Alarm On

Visual Alarm On

Alarm Popup On

E-mail Alerts On

SMS Alerts Off

Receiver A Status

LED Alarm On

Audio Alarm On

Relay Contacts On

Sensitivity -115 dBm

Index	Date Received (yyy-mm-dd)	15 Hex ID	Country	Frequency (Hz)	Level (dBm)	Comments
127	2012-03-29 08:41:55	BEEE4099A00022D	Australia	406028041	-66	
126	2012-03-29 08:40:41	BEEE4099A00022D	Australia	406028041	-65	
125	2012-03-29 08:10:48	ADDD04CF5141801	United States	406028248	-95	
124	2012-03-28 16:38:32	BEEE4099A00022D	Australia	406027837	-75	
123	2012-03-28 16:32:38	BEEE4099A00022D	Australia	406027837	-69	
122	2012-03-28 16:20:15	278DE95FFA4DD033	Canada	406027837	-64	MCC notified - WS
121	2012-03-28 14:20:09	279C000000FFBFF	Canada	406028248	-77	
120	2012-03-28 14:20:00	279C000000FFBFF	Canada	406028248	-77	
119	2012-03-28 14:19:15	279C000000FFBFF	Canada	406028248	-78	
118	2012-03-28 14:18:12	279C000000FFBFF	Canada	406028455	-76	
117	2012-03-28 14:09:25	279C000000FFBFF				

Index: 122
 Date: 2012-03-28 16:20
 15 Hex ID: 278DE95FFA4DD033
 Full Hex Code: FFFE2F93C6F4AF
 Protocol: EPIRB Serial SLP
 Country: Canada (316)
 Burst Mode: Normal Mode (L)
 C/S Approval #: 978
 Serial Number: 12285
 Position Source: Internal GPS
 Auxiliary Radio: None
 Bits 107-110: Default
 Latitude: N 38° 45'00"
 Longitude: W 76° 45'00"

FBM200 DATA

Model

FBM200-A
FBM200-B

FEATURES

Receive all Cospas-Sarsat Frequency channels

Decode all Cospas-Sarsat Protocols

Measure 406 MHz Frequency

Measure 406 MHz Receive Power

Adjustable Receiver Sensitivity

USB Interface

Ethernet Interface

GPS Receiver

GPS Antenna

GIS Mapping

Audio and LED Alarms

Alarm Output – relay contacts

INCLUDED

USB Cable – (3 m length)

AC to USB Adapter

Ethernet cable (3 m length)

Molded 406 MHz Monopole Antenna

Outdoor 406 MHz Antenna

GPS Active Antenna (5 m cable length)

Certificate of Calibration

Operator's Manual

User Interface Software

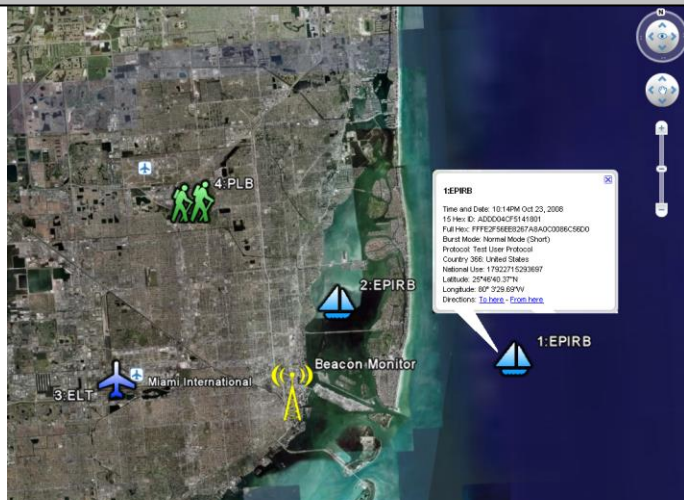
O = optional

SPECIFICATIONS

406 MHz Receiver Sensitivity	-125 dBm
Out of Band Rejection (<400 MHz, >413 MHz)	>145 dB
Harmonic Image Rejection	>95 dB
406 MHz Input Frequency	406.0 – 406.1 MHz
406 MHz RF Input VSWR	1.20:1
406 Input Impedance	50Ω
406 Input Connector	SMA-female RP
GPS Antenna Port bias	+3.3V @ 40 mA max
GPS Antenna Port connector	SMA-female
Receiver power requirements (from USB port)	+5V @ <500 mA
Operating Temperature Range	-40°C to +85°C
Storage Temperature Range	-55°C to +85°C
Dimensions:	108 x 63 x 26 mm 4.3 x 2.5 x 1.0 inches
Weight:	0.230 kg 0.5 lbs

A GIS Mapping Interface!

The software automatically maps the location of the decoded GNSS location data directly into a map. It displays unique icons for ELTs, EPIRBs, and PLBs, decode information, RSSI, and timestamp of the beacon.



ORDERING INFORMATION

ITEM	PART NUMBER
FBM200A	910-FBM200A
FBM200B	910-FBM200B
Outdoor Antenna – optional (includes mounting hardware)	420-100
Extension Cable (for use with outdoor antenna)	
25' 7.6 m	130-022-A
50' 15.2 m	130-022-B
75' 22.9 m	130-022-C
100' 30.5 m	130-022-D
Certificate of Calibration (optional)	FBM200-CAL



WS Technologies Inc. is an
ISO 9001 Certified company



WS Technologies Inc.

Kelowna, BC
CANADA

info@wst.ca
www.wst.ca